



Centre County Recycling & Refuse Authority  
 253 Transfer Rd.  
 Bellefonte, PA 16823  
 (814) 238-7005  
 ccr@centrecountyrecycles.org  
 www.centrecountyrecycles.org

Hours of Operation  
 Transfer Station  
 Monday - Saturday, 8:00 am to 4:00 pm  
 Recycling  
 Monday - Friday, 8:00 am to 4:00 pm

Winter 2016/17  
 Volume 5, Issue 4

The following information is courtesy of the Centre County District Attorney's Office.

## Prescription Drug Take Back Boxes

Unused and expired medications can be dropped off at these locations:

<b>Bellefonte Police Department</b>	236 W. Lamb St. Bellefonte	8:00—4:00 Monday—Friday
<b>Centre County Sheriff's Office</b>	213 E. High St. Bellefonte	8:30—5:00 Monday—Friday
<b>Ferguson Police Department</b>	3147 Research Dr. State College	8:00—5:00 Monday—Thursday 8:00—4:00 Friday
<b>Patton Township Police Department</b>	100 Patton Plaza State College	8:00—4:30 Monday—Friday Closed Wed 12—1
<b>Penn State Police Department</b>	Eisenhower Parking Deck University Park	Open 24 Hours
<b>State College Police Department</b>	243 S. Allen St. State College	8:00—5:00 Monday—Friday
<b>Willowbank Building</b>	420 Holmes St. Bellefonte	8:30—5:00 Monday—Friday

Pharmaceuticals should remain in the original container or a sealed zip-lock type bag. Personal information should be removed or covered with a permanent marker before placing in the drop box.

- Household prescription and over-the-counter solid medications
- Liquids in a leak proof container
- Tablets and capsules
- Pet medications
- Vitamins



- Injectables, syringes, needles
- Aerosol cans (inhalers, etc)
- Medications containing iodine
- Thermometers
- Hydrogen peroxide
- Illegal drugs



Centre County RECYCLES

## Holiday Recycling Guide



Be environmentally friendly this holiday season. Check out the tips below on what to do with cardboard, wrapping paper and Christmas trees.

### Corrugated Cardboard Boxes

Corrugated cardboard boxes can be recycled if they are flattened and free of all "peanuts." Curbside customers can place flattened boxes beside their curbside recycling bin. Residents may also bring their cardboard boxes to any drop-off recycling container labeled "Corrugated Cardboard".

### Wrapping Paper & Gift Boxes

Gift boxes and non-metallic wrapping paper can be recycled. All CCRRA curbside recycling customers can recycle their gift boxes, non-metallic wrapping and tissue paper with their curbside recyclables. Please bag these with mixed paper. Non-curbside customers wishing to recycle gift boxes, non-metallic wrapping paper and tissue paper can bring it to any drop-off recycling container labeled for "Mixed Paper."

For a recycling drop-off location nearest you, call our office at 238-7005 or visit our website, [www.centrecountyrecycles.org](http://www.centrecountyrecycles.org).



### Christmas Trees

Be sure to check with your local municipality for Christmas tree recycling options.

### Buy Recycled This Season

Purchase holiday cards and wrapping paper that are labeled "made from" recycled material and better yet labeled "made from post-consumer" recycled material. Look for at least 30% recycled content.

## Poster Contest Winners Announced

This fall, CCRRA & Weis Markets sponsored a "How My Buddies & I Recycle" poster contest for all 5th grade students in Centre County.

We received hundreds of entries and a panel of judges chose twelve winning posters and artists. We would like to congratulate our twelve winners (pictured right) for their amazing artwork and dedication to preserving our environment.

All twelve winning posters will be made into a 2017 calendar that will be distributed to all Centre County 5th grade students. In addition, the calendar will be available at all 5 Centre County Weis Markets stores at the end of December.

Each of the twelve students have received a \$25.00 Weis Markets gift card and will receive a Buddy Bench for their school this spring.

Congratulations once again to all of our winners. Calendars will be available free of charge while supplies last, so go grab yours today!

Thank you to Weis Markets for helping sponsor this wonderful opportunity for our 5th grade students.



*Back row: Niziah Noone, Howard Elem; Quentin Muirhead, Mountaintop Area Elem; Jessica Wallace, Park Forest Elem; Marlando Jones, Wingate Elem; Joseph Jones, Port Matilda Elem; John Walters, Marion Walker Elem; Andrew Lebedev, Mount Nittany Elem; Abigail Bigger, Gray's Woods Elem. Sitting front row: Ana Hefflen-Wood, Radio Park Elem; Jillian Stoltz, Benner Elem; Brenda St. Clair, Pleasant Gap Elem & Marlee Butterworth, Philipsburg-Osceola Middle School.*

# Calendar of Events - Note Some Holiday Collection Changes

## Centre County Recycling & Refuse Authority Board Meetings

Meetings begin at 5:30 pm unless otherwise publicized.

December 21, 2016 (1:00 pm)  
January 9, 2017

CCRRA Office  
253 Transfer Rd  
Bellefonte, PA 16823

## Professional Recyclers of Pennsylvania Certification Classes

Certification classes are sponsored by PROP. For details on the certification program visit [www.proprecycles.org](http://www.proprecycles.org).

**March 8-9, 2017**  
*Recycling Practice & Theory*  
CCRRA Interpretive Center

PROP also offers courses online. If you are interested in online courses on various recycling topics, visit [www.proprecycles.org](http://www.proprecycles.org) to learn more.

## State College Borough Holiday Collection Schedule

Holiday	Monday	Tuesday	Wednesday	Thursday
Christmas Holiday Week of December 26	No Bulk/Brush Collection	Regular Collection	Regular Collection	Regular Collection
New Year's Week of January 2	No Bulk/Brush Collection	Regular Collection	Regular Collection	Regular Collection

## Bellefonte Borough Holiday Recycling Schedule

Holiday	Normal Dates for Recycling Collection	Alternate Dates for Recycling Collection
Christmas Eve	Friday, December 23	Wednesday, December 21
Christmas Day	Monday, December 26	Wednesday, December 28
New Year's Day	Monday, January 2	Wednesday, January 4

## Centre Region COG Holiday Collection Schedule

*The following applies to residents living in the Townships of Benner, College, Ferguson, Harris & Patton.*

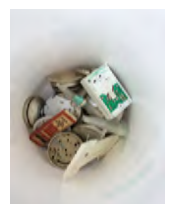
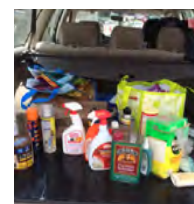
**No Change** - There will be no changes in recycling and refuse collection due to the Christmas holiday. There will also be no change in recycling and refuse collection due to the New Year's holiday.

*\*For all other municipalities, please contact your trash hauler for a list of possible holiday delays.*

## Save the Date - April 28-29, 2017 Household Hazardous Waste Collection Event

Next year's HHW Collection event will be held on April 28-29. These are the days to properly dispose of household items that are hazardous, corrosive, reactive, toxic and flammable. This includes items such as: insecticides, weed killers, pool chemicals, cleaners, poisons, oil based paints, CFL bulbs, fluorescent tubes and most other chemicals from households only.

- Dates:** Friday, April 28, from 10:00 am - 6:00 pm  
Saturday, April 29, from 8:00 am - 2:00 pm
- Location:** 253 Transfer Road, Bellefonte PA 16823
- Cost:** Free



# GUIDE TO CURBSIDE RECYCLING



## STEEL & ALUMINUM - CANS & FOIL

Rinse and remove food residue. Labels acceptable.



## CORRUGATED CARDBOARD

Break down all cardboard boxes. Place beside bin.



## PLASTIC - BOTTLES, JUGS & JARS

Rinse containers. Lids and labels acceptable.



## MIXED PAPER, PAPERBOARD & MAGAZINES

Bag / bundle all paper. Bag shredded paper.



## GLASS - BOTTLES & JARS

Rinse containers. Lids and labels acceptable.



## NEWSPAPER

Bag / bundle separately.



Centre County Recycling & Refuse Authority

**Chair**  
Dave Pensak

**Vice Chair**  
Dennis Hameister

**Secretary**  
Richard Stehouwer

**Treasurer**  
Trilby Mayes

**Board Member**  
Irv Hoy

**Board Member**  
Mark Henry

**Board Member**  
Jenn Shufan

**Executive Director**  
Ted W. Onufrak

**Deputy Executive Director/  
Recycling Coordinator**  
Joanne Shafer

**Operations Manager**  
Regan Hosterman

**Office Manager**  
Pamela Faust

**Administrative Coordinator**  
David Immel

**Education Coordinator**  
Amy Schirf

**Ordinance Enforcement Officer**  
Rod Fye

**Customer Service Representative**  
Mimi Cooper

**Customer Service Representative**  
Ed Hicks

Clip and post on your refrigerator!

**NOT IN YOUR RED BIN**

- Batteries
- Styrofoam™
- Paper Plates/Cups
- Glassware/Ceramics
- Miscellaneous Plastics

**WHEN IN DOUBT, CHECK IT OUT**

**814.238.7005**  
[www.centrecountyrecycles.org](http://www.centrecountyrecycles.org)

### Did You Know?

You can now buy State College Borough Compost at CCRRA. The cost is \$6.00 per 40 lb bag. Just ask our Scale Operator for details and we will even load the bags in your vehicle. All proceeds benefit the Authority's Education Endowment Fund.



*Centre County Recycles is a quarterly newsletter published for Centre County residents as a source of information regarding recycling and environmental issues. Centre County Recycles is printed on 30% RECYCLED CONTENT PAPER with soybean based inks AND IS RECYCLABLE.*



This publication is partially funded by an Act 101 Recycling Grant through [www.depweb.state.pa.us](http://www.depweb.state.pa.us)